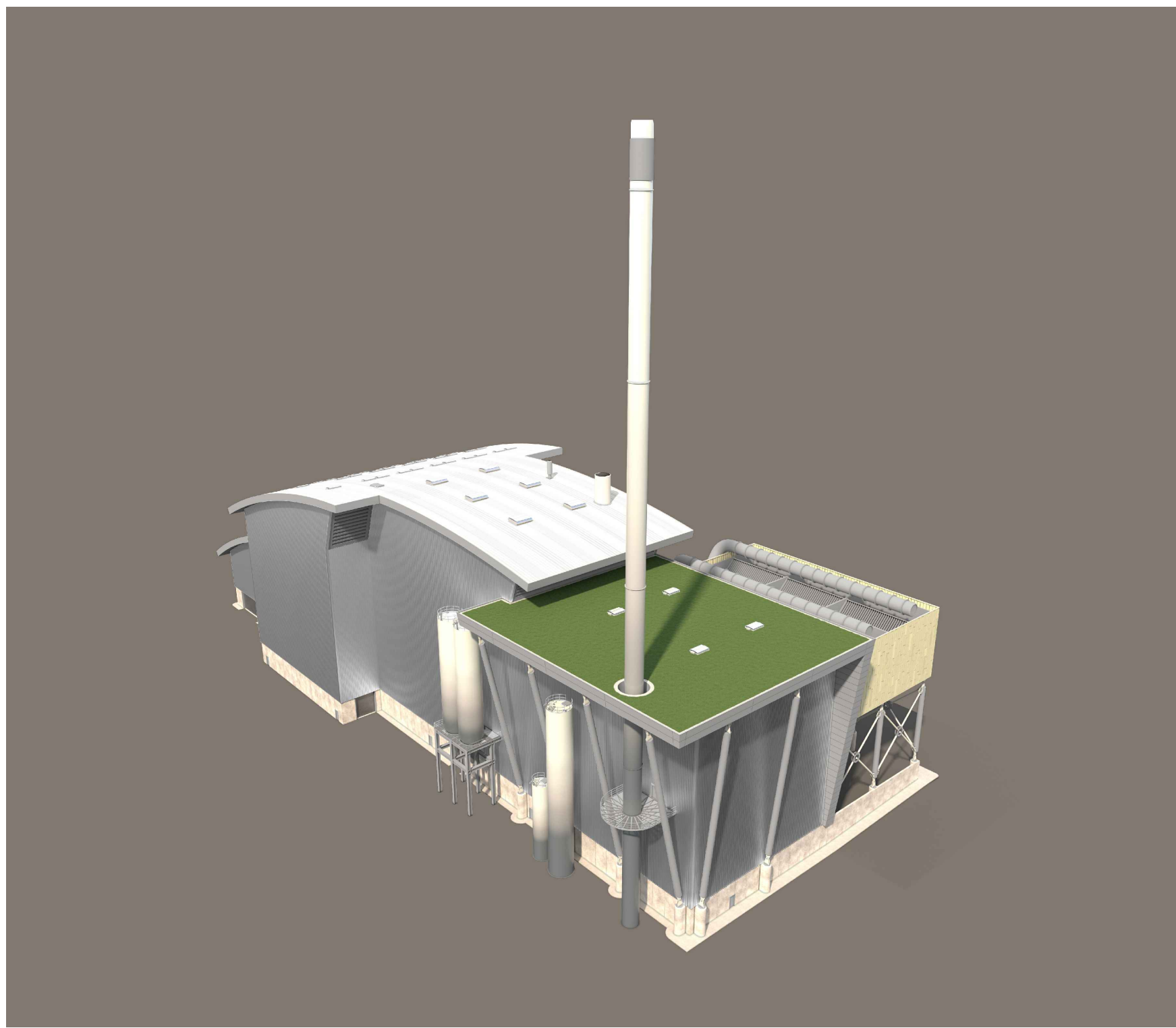


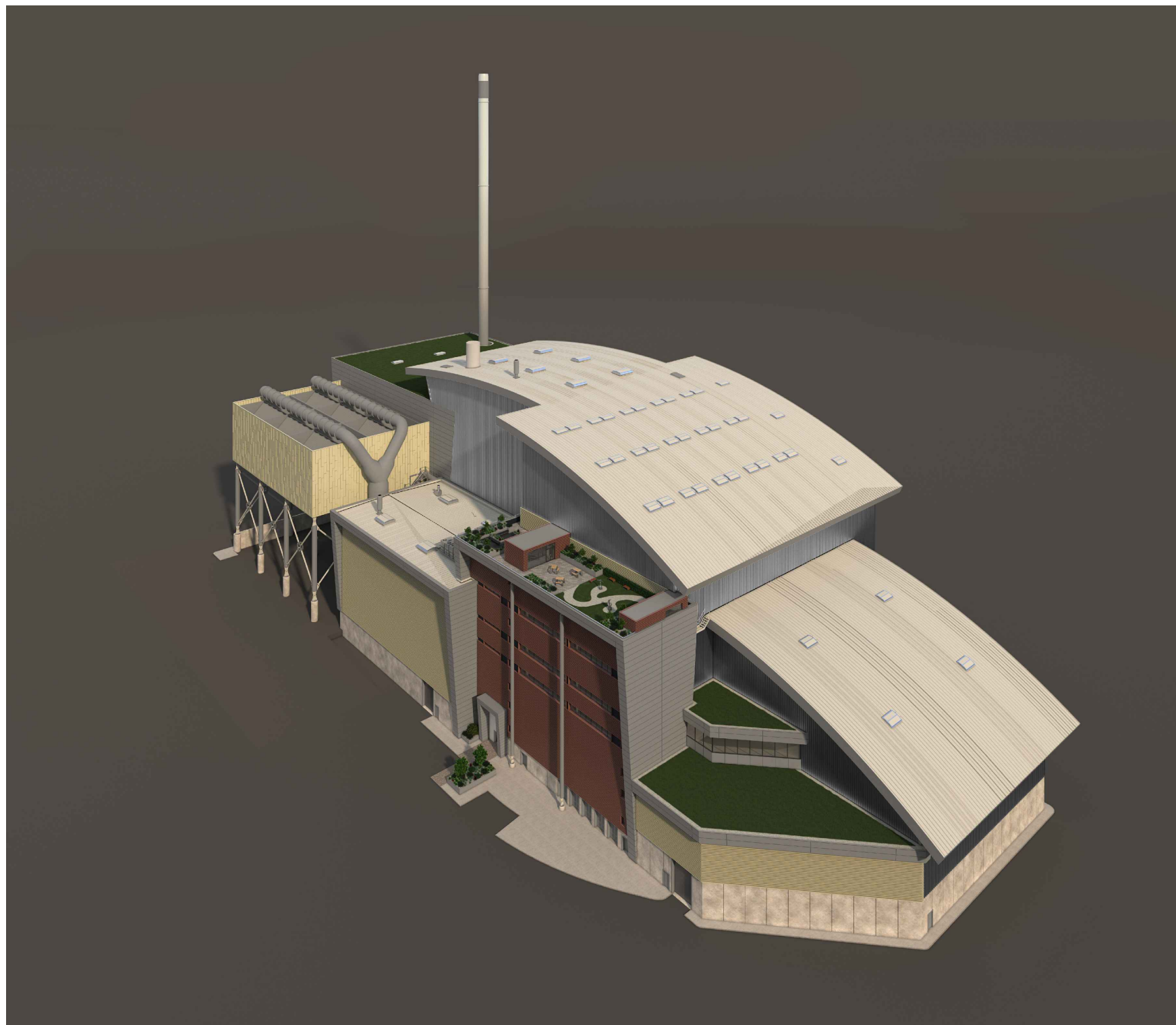
AS VIEWED FROM THE EAST
NTS



AERIAL VIEW FROM THE EAST
NTS



AS VIEWED FROM THE WEST
NTS

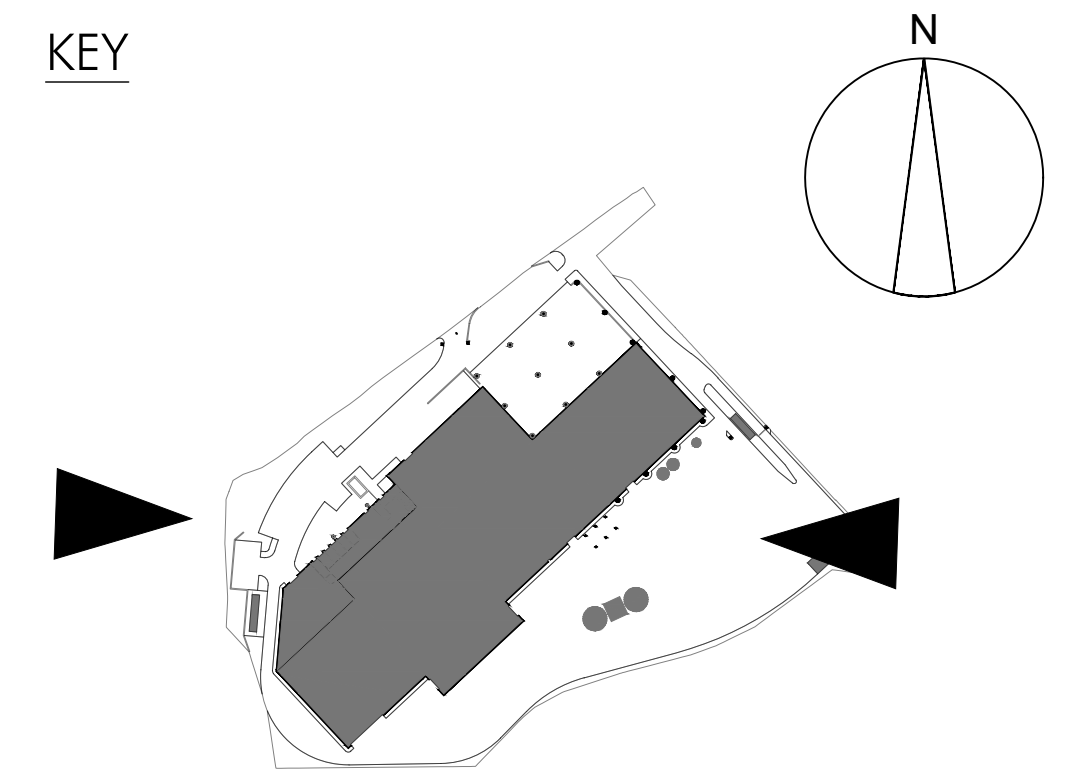


AERIAL VIEW FROM THE WEST
NTS

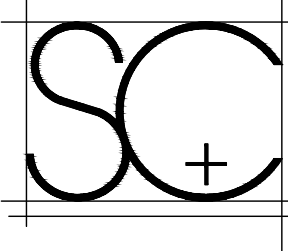
LEGEND

- ID02: Tipping hall
- ID03: Waste bunker building
 - (ID03a): Tipping bunker
 - (ID03b): Main waste bunker
 - (ID03c): Waste chute platform
 - (ID03d): Crane maintenance area
 - (ID03e): IBA Bunker
 - (ID03f): IBA loading enclosure
 - (ID03g): Back loading hatch
- ID04: Boiler house
- ID05: Air pollution control building
 - (ID05a): APC plant and reactor
 - (ID05b): Bag filter house
 - (ID05c): Induced draft (ID) fan
 - (ID05d): Compressed air station
 - (ID05e): Water treatment plant
 - (ID05f): Urea tank
- ID06: APCr silos
- ID07: Lime & activated carbon silos
- ID08: Chimney & CEMS platform
- ID09: Turbine hall
- ID10: Air cooled condenser (ACC)
- ID11: Water re-cooling system
- ID17: Switchgear building, administration building and control room
- ID18: Workshop & stores

KEY



© copyright



Savage +
Chadwick
Architects

Armitage House
Lord Street
Douglas
Isle of Man
IM1 1LE
t 01624 672050
f 01624 629237
www.savagechadwick.com



NOTES

Figured dimensions are to be used in preference to scaled dimensions. Do not scale from this drawing. Contractors MUST CHECK ALL dimensions and levels on site and any discrepancies must be reported to the Architect. If in doubt consult the Architect.

rev	date	comment
A	18/12/23	Colour scheme revised following additional planning consultation

rev	date	comment
-	-	-

client

MVV

project

ENERGY FROM WASTE,
COMBINED HEAT & POWER
FACILITY, CANFORD.

drawing

COMPUTER GENERATED
VISUALISATIONS

scale

1:250

date

23/02/2023

project no.

SC1643/PL

paper size

A1

drawn

NAB

rev.

A